

State of Wyoming Corner Record

(In compliance with the **CORNER PERPETUATION AND FILING ACT**, Wyoming Statutes, 1997 Section 33-29-140 et. seq., and the Rules and Regulations of the Board of Professional Engineers and Professional Land Surveyors)

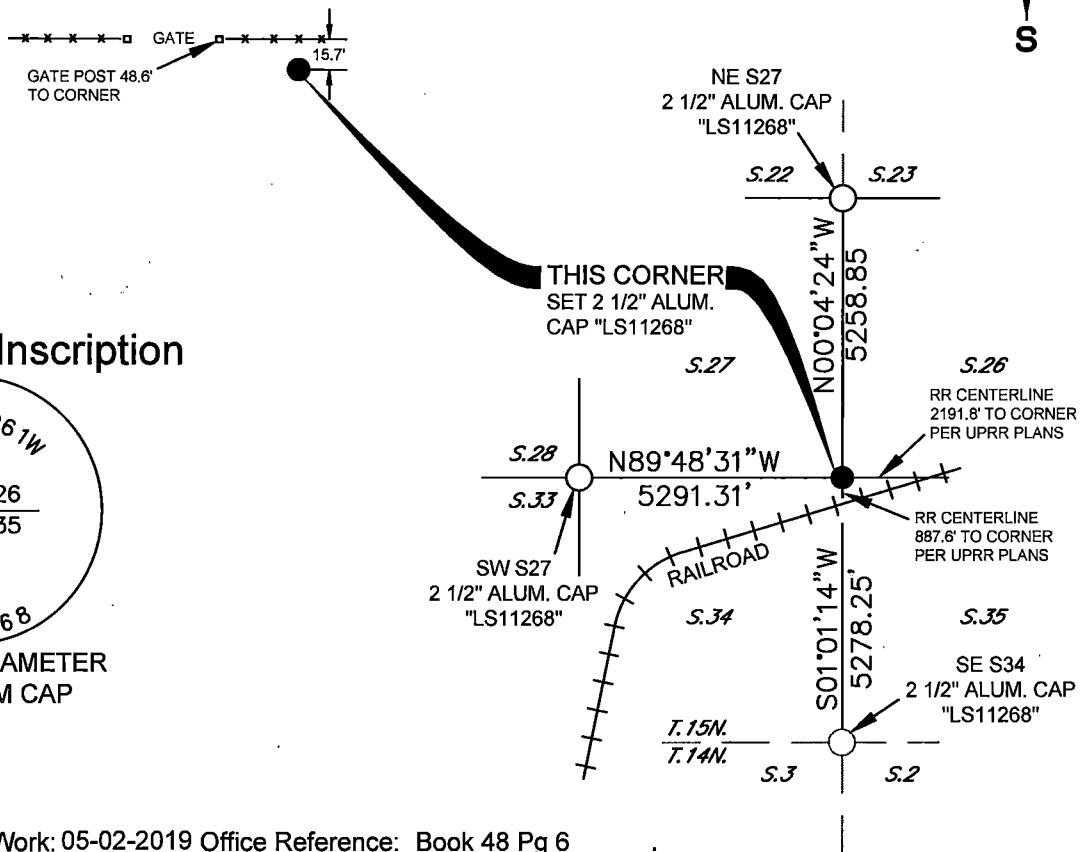
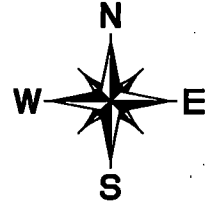
Record of original survey and citation of source of historical information (if corner is lost or obliterated). Description of corner monumentation evidence found and/or monument and accessories established to perpetuate the location of this corner. Sketch of relative location of monument, accessories, and reference points with course and distance to adjacent corner(s) (if determined in this survey).

Original Record: (J.W. Hammond - 1872) Set sandstone 20x12x4 for corner to sections 26, 27, 34, & 35

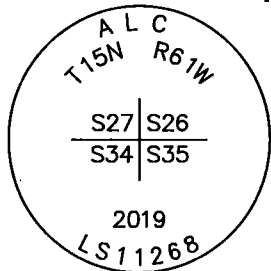
Subsequent Record: Union Pacific Railroad Right-of-Way Plans. Plans show this corner as "Stone".

Evidence Found: No evidence of original stone. Measured to center of Union Pacific Railroad southerly and easterly and used Union Pacific Railroad Right-of-Way plans to compute a position.

Perpetuation: At the computed position. I set a 5/8" x 24" rebar with 2 1/2" diameter aluminum cap marked as shown below. Cap is set flush with ground and situated as shown below.



Monument Inscription

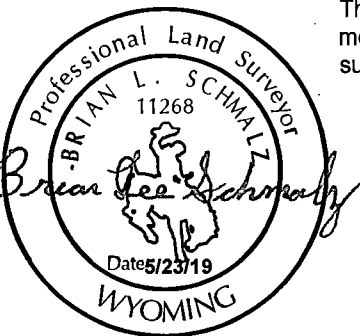


2 1/2 INCH DIAMETER ALUMINUM CAP

Date of Field Work: 05-02-2019 Office Reference: Book 48 Pg 6

Cross Index Plat

1	2	3	4	5	6	7	8	9	10	11	12	13	14	15	16	17	18	19	20	21	22	23	24	25			
A																									A		
B																									B		
C	6	5	4	3	2	1																			C		
D																										D	
E																										E	
F																										F	
G	7	8	9	10	11	12																				G	
H																										H	
J																										J	
K																										K	
L	18	17	16	15	14	13																				L	
M																										M	
N																										N	
O																										O	
P	19	20	21	22	23	24																				P	
Q																										Q	
R																										R	
S																										S	
T	30	29	28	27	26	25																				T	
U																										U	
V																										V	
W																										W	
X	31	32	33	34	35	36																				X	
Y																											Y
Z																											Z
	1	2	3	4	5	6	7	8	9	10	11	12	13	14	15	16	17	18	19	20	21	22	23	24	25		



BRIAN L. SCHMALZ
PLS 11268

This corner record was prepared by me or under my direction and supervision.

PO BOX 502 | 135 PINE STREET
BUFFALO, WY 82834 | 307.684.1200



Altitude Land Consulting, P.C.
ENGINEERING | SURVEYING | CONSULTING



RECP #: 754167
RECORDED 5/30/2019 AT 3:22 PM BK# 2623 PG# 664
Debra K. Lee, CLERK OF LARAMIE COUNTY, WY PAGE 1 OF 1